



METRICH DRUG TASK FORCE 2016 REPORT



Detective Evans, Ashland Police Division
Detective Rohn, Ashland County Sheriff's Office

METRICH Enforcement Unit handled one hundred and thirty-six (136) cases for the year. In 2016, Detective Rohn from the Ashland County Sheriff's Office was assigned to the METRICH Enforcement Unit. Below is a statistical breakdown of the cases investigated by the METRICH Unit.

Persons Indicted/Charged in 2016

Eighty-nine (89) people were charged / indicted, totaling two hundred and sixty two (262) felony counts.

Twenty-five (25) people are still waiting for their cases to be presented to the Ashland County Prosecutor's Officer and Grand Jury.

The METRICH Unit obtained and executed eighteen (18) house search warrants.

Narcotic breakdown of the 136 METRICH cases

}> Heroin	50 cases
}> Marijuana	26 cases
}> Prescription Drugs	18 cases
}> Methamphetamine	17 cases
}> Cocaine	12 cases
}> Weapons	8 cases
}> Fentanyl	7 cases
}> Carfentanil	5 cases
}> K-2 (Synthetic Marijuana)	5 cases
}> Methamphetamine Labs	5 cases
}> Molly (MDMA)	2 cases
}> Psilocybin Mushrooms	2 cases

Note: Some cases involved a combination of drugs.

There is an increasing problem related to the heroin epidemic in the County/City of Ashland. The epidemic remains our number one (1) challenge and focus. Below is a list of the reported overdoses for 2016.

2016 METRICH

Overdoses Ashland City / County Residents

#	Month	Race/ Gender	OD / Death	Age	City/County	Narcotic
1	February	W / F	OD	25	City	Heroin + Fentanyl
2	March	W/M	OD	19	City	Heroin + Fentanyl
3	March	W/F	OD	28	City	Heroin + Fentanyl
4	April	W/M	OD	22	County	Heroin
5	April	W/M	OD	35	City	Heroin
6	April	W/M	OD-Death	26	City	Heroin + Fentanyl
7	May	W/F	OD-Death	26	County	Heroin + Fentanyl
8	.June	W/M	OD-Death	27	City	Heroin + Cocaine
9	June	W/M	OD	39	City	Heroin +Fentanyl
10	June	W/F	1st OD	35	City	Heroin + Fentanyl
11	June	W/M	OD-Death	56	City	Heroin + Fentanyl
12	June	W/F	OD	29	County	Heroin
13	.June	W/F	OD-Death	31	City	Heroin
14	July	W/M	OD	25	City	Heroin
15	July	W/M	OD	38	City	Heroin
16	July	W/M	OD	35	City	Heroin
17	July	W/M	OD	38	County	Heroin
18	July	W/F	2nd OD	35	City	Heroin + Fentanyl
19	July	W/M	OD-Death	37	County	Heroin
20	August	W/M	OD	42	City	Heroin
21	August	W/F	3rd OD	35	City	Fentanyl
22	August	W/M	1st OD	38	City	Carfentanil
23	August	W/M	OD-Death	21	City	Carfentanil
24	August	W/M	OD-Death	39	City	Heroin
25	August	W/M	OD-Death	37	County	Heroin
26	August	W/M	OD-Death	41	County	Heroin + Cocaine + Carfentanil
27	August	W/M	OD	40	City	Heroin
28	August	W/M	OD	29	City	Heroin
29	August	W / M	OD	43	City	Hydrocodone
30	August	W / M	2nd OD	38	City	Carfentanil
31	August	W / F	OD	36	City	Carfentanil
32	September	W / F	OD	36	City	Heroin
33	September	W / M	OD-Death	43	City	Heroin + Carfentanil
34	September	W / M	OD	48	County	Heroin
35	September	W / M	OD-Death	18	City	K-2
36	September	W / M	OD	23	City	Heroin
37	September	W / F	OD	27	County	Heroin
38	September	W / M	OD	28	County	Heroin
39	September	W / M	OD	36	City	Heroin
40	September	W / M	OD	54	County	Heroin + Carfentanil

#	Month	Race/ Gender	OD / Death	Age	City/County	Narcotic
41	October	W / M	OD	26	County	Opana (Oxymorphone)
42	October	W / M	OD	36	County	Heroin
43	October	W / M	OD	26	City	Heroin
44	October	W / M	OD	33	City	Heroin
45	October	W / M	OD	32	City	Heroin
46	November	W / M	OD	28	City	Heroin
47	November	W / M	OD	38	County	Heroin
48	November	W / M	OD	37	County	Meth + Alcohol
49	November	W / M	OD	20	County	Heroin
50	November	W / F	OD	53	City	Heroin
51	November	W / M	OD	52	City	Heroin
52	December	W / M	OD	41	City	Heroin

Out of the one hundred and thirty-six (136) METRICH cases investigated, we were able to make thirty-one (31) controlled purchases of narcotics. Below is a breakdown of those controlled (narcotics) purchases:

Heroin	13	controlled buys
Marijuana	9	controlled buys
Crack Cocaine	4	controlled buys
Prescription Drugs	3	controlled buys
Methamphetamine	3	controlled buys
Psilocybin (Mushrooms)	2	controlled buys
Molly (MDMA)	1	controlled buys

Some controlled buys involved more than one (1) drug.

In 2016 ACSO Detective Rohn and APD Detective Evans worked with Loudonville P.D on several narcotics cases. The collaborative effort proved successful on a variety of levels. During the operation, the combined agencies executed five (5) residential search warrants and indicted ten (10) subjects on multiple felony drug charges. The Loudonville Police Department including but not limited to Chief Taylor, Detective Hannan, and Captain Coey, were instrumental in the success of the operation.

It is important to acknowledge that a good number of the 136 cases were initiated by road patrol. Those cases arose from solid investigative traffic stops from both police officers and deputies. It is the hope of the METRICH Unit that uniformed officers continue to call Detective if they need assistance or if they simply have a suspicion or question.

Overdose cases are being monitored and tracked. Being involved earlier increases the likeliness that METRICH can investigate/identify the dealer who is selling the drugs used in the overdoses. Being able to trace the overdose drug back to the dealer will save lives. We work closely with Mansfield METRICH and provide them Intel on our overdoses. Mansfield METRICH shares information with Ashland as well.

The comparative statistics provide the startling truth about the seriousness of the epidemic. In 2014, the Ashland area had sixteen (16) overdoses with three (3) resulting in death. As you read above, in 2016, there were fifty-two (52) overdoses with twelve (12) resulting in death. One of the contributing reasons for the increase is the introduction of Fentanyl and Carfentanil in our area which occurred mid-year of 2016. Ashland had seven (7) known cases of Fentanyl and five (5) known cases of Carfentanil. Both of these substances can kill a person, just by breathing it. It is imperative that officers be cognizant of the risks when searching places in confined areas or when coming in contact with an active user.

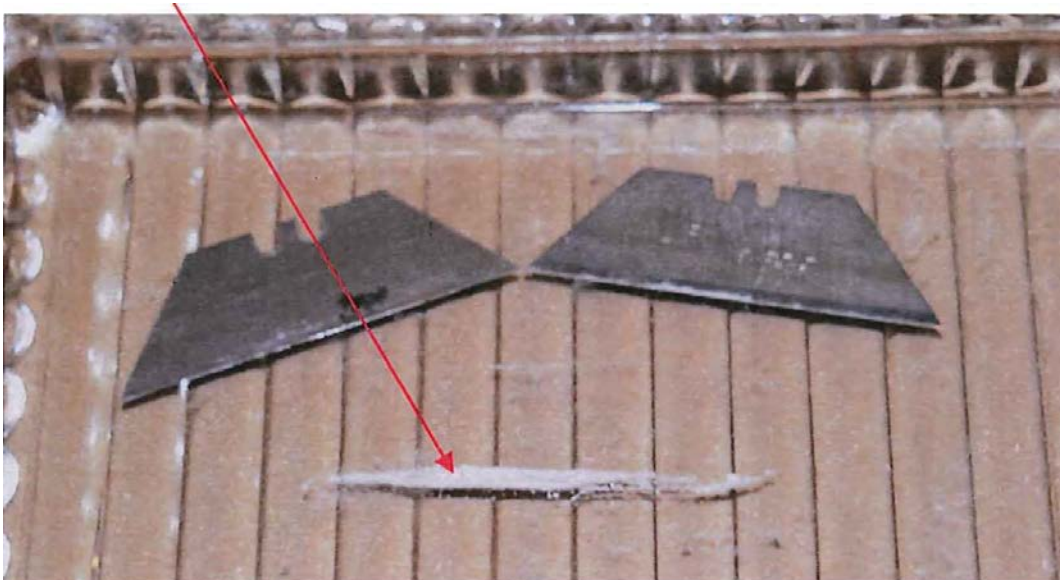
Additionally, there was a substantial increase in the use of Crystal Methamphetamine in 2016. Ashland METRICH handled seventeen (17) cases. This is startling because Ashland hadn't seen Crystal Methamphetamine since 2008. Crystal Methamphetamine is a strong stimulant. Law Enforcement Officers should use caution when dealing with people who are under the influence.

The Ashland METRICH Unit spent an approximate \$8500 in METRICH Funds in 2016. We also received a Surface Pro tablet which is compatible with our new computer system and a display board.

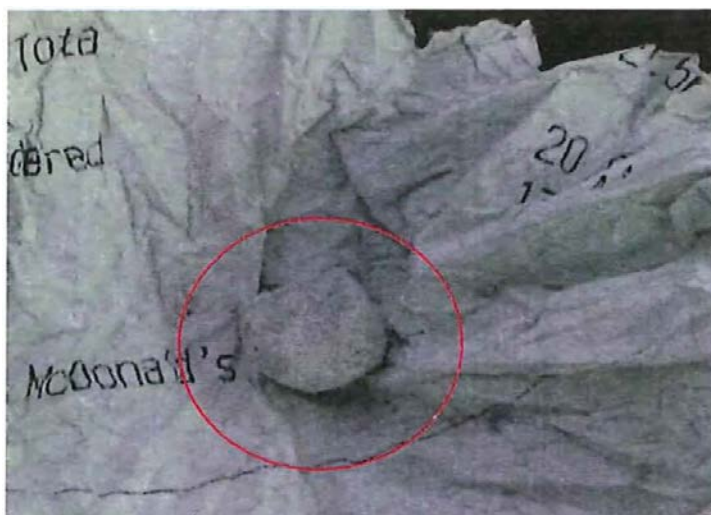
The METRICH Unit had a booth at the Ashland County Fair this year. The effort was a success. We came in contact with many children and their parents. We were able to provide education and hand-outs relating to the risks associated with drugs. We plan to participate in the 2017 Ashland County Fair as well. Thanks to the Loudonville Police Department and Ashland County Sheriff's Office for teaming up for the event.



When tested, this powder was determined to be Carfentanyl. It appears to look like other, less lethal substances. Officers should remain aware of the possibility that any powder could be deadly and should use caution.



This rock substance was tested and came back as Fentanyl.



This rock substance was tested and came back as Heroin.



This rock substance was tested and came back as Crystal Methamphetamine.



Below is a foil containing Crustal Methamphetamine shards.

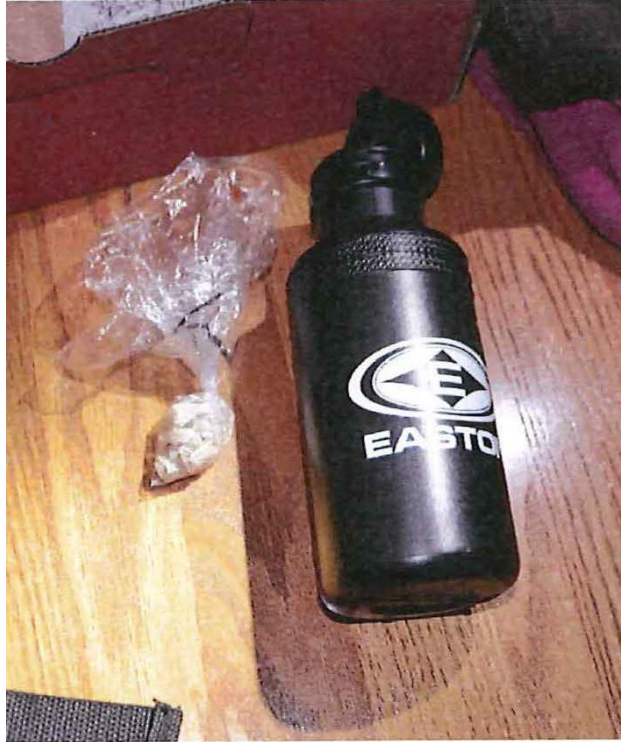


**Methamphetamine in the powder form
(locally made with the shake and bake method).**



Below is a picture from one of search warrants executed in Loudonville, OH.

It was several ½ grams of heroin hidden in the water bottle.



Below is a picture from a lengthy investigation. The case is still going through the Court process but several suspects were charged with first degree felonies.



Regular Cases

Detective Rohn and Detective Evans worked several regular cases throughout the year. Some of those cases were a result of drug Intel. There were two (2) different occasions in 2016 where we had people breaking into houses. Both strings of Burglaries (B&E) were solved by using drug Intel to obtain search warrants for the residences of the suspects. In both cases, some evidence was seized from the suspects before the crimes were reported from the victims. Those two (2) search warrants cleared up six (6) Burglaries and five (5) B&E's.

Detective Rohn handled twenty-seven (27) regular cases in 2016 and Detective Evans handled twenty (20). Those cases ranged from helping officers / deputies on misdemeanors and low grade felonies, to helping with the murder case, rape cases and robbery cases. Besides the mentioned cases, Detective Rohn and Detective Evans also provided numerous drug trainings for area business, schools, and groups. The importance of narcotics awareness and education cannot be stressed enough.